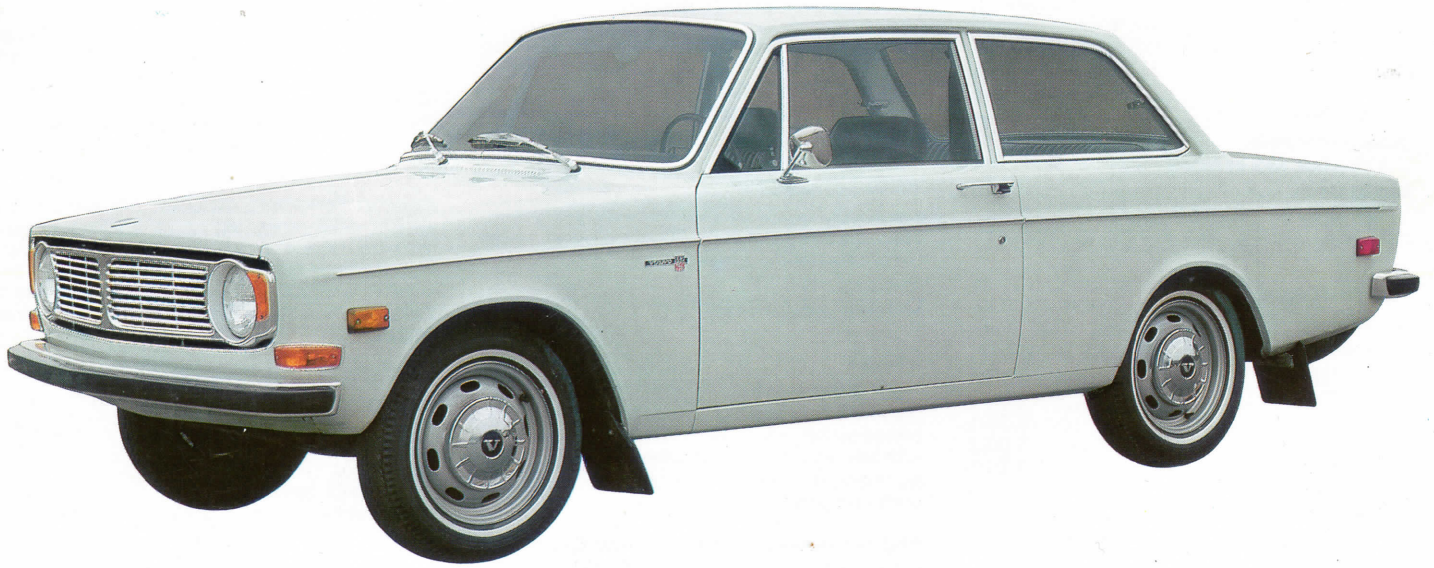




VOLVO 140 SERIES



Data sheet, the Volvo 140 Series



The Volvo 140 series is equipped with the Type B 18, 115 horsepower engine and four wheel, power assisted disc brakes. It is available with a fully synchronized four-speed transmission with floor-mounted gearshift lever or a three-speed automatic transmission with the shift lever mounted on the steering column.

Engine

Type B18. Four cylinders, overhead valves, five-bearing crankshaft, twin horizontal carburetors with "Dual Induction" exhaust emission control system. Oil cooler. Full flow oil filter.

Bore 3.313 in.
Stroke 3.150 in.
Displacement 109 cu. in.

Maximum Output:
115 b.h.p. SAE at 6,000 r.p.m.

Maximum Torque:
112 ft. lb. SAE at 4,000 r.p.m.

Compression Ratio: 10.0:1

Transmissions

Four-speed, fully synchronized with floor-mounted gearshift lever. Standard 'H' pattern.

Ratios: 1st 3.13:1
2nd 1.99:1
3rd 1.36:1
4th 1.00:1
Reverse 3.25:1

Optional: Automatic, three-speed: Column-mounted shift lever. Standard P-R-N-D-L gear quadrant.

Rear Axle

Hypoid type.
Ratios: Sedan 4.1:1
Station Wagon 4.56:1

Cooling System

Sealed, with anti-freeze. Coolant circulation by engine driven pump. Capacity 2½ gallons. Transparent expansion tank.

Fuel System

Twin horizontal carburetors supplied by mechanical pump. Tank capacity 15½ gallons.

Electrical System

Voltage 12
Battery capacity 60 amp. hrs.
Generator output max. 360 W
Starter motor output 1 h.p.

Brake System

Footbrake. Power assisted four wheel disc brakes. Twin circuits each operate on both front wheels and one rear wheel. Warning light turns on if one circuit fails. Single circuit provides 80% of full four wheel braking efficiency. Special rear wheel pressure relief valves assure maximum stability during emergency stops.

Front: Self-adjusting 11.6" discs—
pad area 23 sq. in.

Rear: Self-adjusting 11.6" discs—
pad area 14½ sq. in.

Parking Brake. Separate mechanically operated rear wheel drum brake system. Lining area 27 sq. in. Warning light on dashboard. Quick release handbrake lever located between driver's seat and door.

Wheels and Tires

Balanced pressed steel wheels with safety rims. Stainless steel hubcaps. White sidewall, wide-base, low-profile, tubeless tires.

Rim size: 4½ x 15"
Tire size: 165 S 15 (6.85 x 15")

Chassis

Front Suspension. Independent with rubber-mounted control arms. Steering knuckles supported by ball joints. Anti-sway bar. Coil springs with telescopic shock absorbers.

No lubrication of front suspension and drive shaft components is necessary.

Rear Suspension. Solid rear axle carried by longitudinal rubber-mounted control arms. Transverse location by rubber-mounted track rod. Coil springs with telescopic shock absorbers. Station wagons are equipped with heavy-duty springs plus auxiliary rubber springs.

Steering. Cam and roller type with 4 turns lock to lock. Recessed steering wheel. Collapsible steering column.

Turning circle: Between curbs 30'4"

Body

Integral all-welded steel. Completely rust-proofed and undercoated. Passenger compartment surrounded with boxed steel members. Impact absorbing front and rear body sections. Front and rear wrap around bumpers with full rubber inserts.

Instrumentation. Speedometer, odometer, trip-meter. Fuel gauge. Water temperature gauge. Generator, oil pressure, headlight beam, directional signal and parking brake warning lights. Emergency flashers.

Other standard equipment. Three-point front seat belts. Rear-seat fitted with three lap belts. Reclining front bucket seats with headrests. Padded dashboard, sun visors, roof and interior. Deluxe vinyl upholstery and trim. Passenger assist handles front and rear. Pull down armrest in rear seat.* Child-proof rear door locks. Thermostatically-controlled heater and defroster system. Front and rear window defrosters.* Direct air duct to rear seat. Two fresh air intakes. Two-speed electric blower. Two-speed electric windshield wipers with windshield washers.

Automatic back-up lights. Variable instrument lighting. Interior courtesy lights. Illuminated glove compartment. Side reflectors. Steering wheel lock incorporated with ignition lock.

Exterior and interior rear view mirrors. Cigarette lighter. Front and rear ashtrays. Tool kit and jack.

Optional Equipment. Includes: AM and AM/FM radios. Roof racks. Ski racks. Limited slip differential. Fitted spare gas can. Air conditioning. Bumper over-riders. Trim package... and a wide variety of other equipment designed to tailor-make a Volvo to your individual requirements.

Dimensions and Weights

Length 182.7"
Width 68.1"
Height 56.7"
Wheelbase 102.4"
Track, front and rear 53.1"
Curb weight (approx.) 144S 2600 lbs.
142S 2520 lbs.
145S 2870 lbs.

145S Cargo compartment:
Volume (approx.) 70 cu. ft.
Max. length 74.0"
Min. length 44.5"
Max. width 52.0"
Min. width 42.0"
Height 33.0"

Tailgate
Height 31.5"
Width 46.0"

The factory reserves the right to make changes at any time, without notice, in prices, colors, materials, equipment, specifications and also to discontinue models.

*Sedans only.