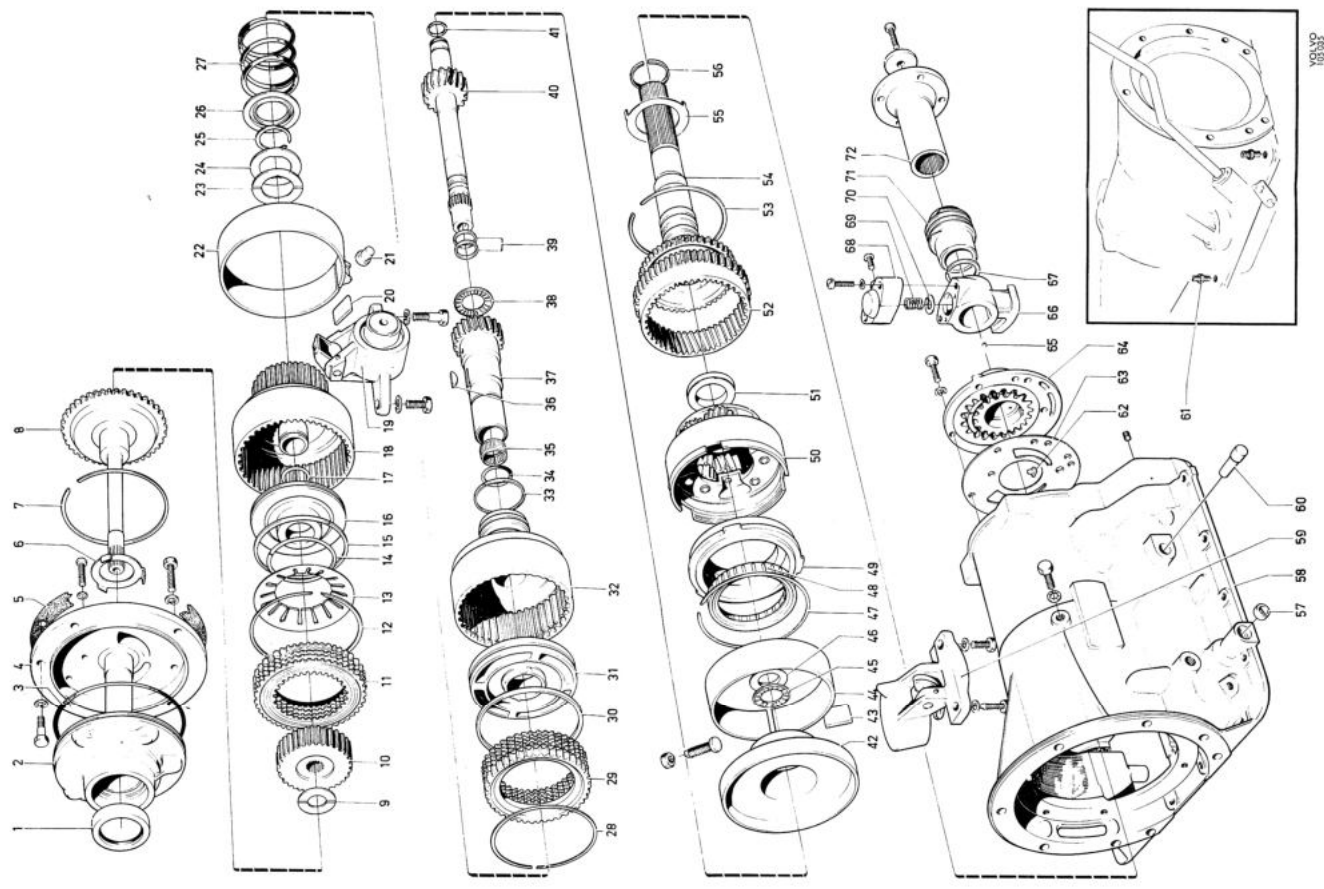




# **SERVICE MANUAL**

**VOLVO 164 1971**

---



1. Oil seal
2. Front pump
3. O-ring
4. Pump body
5. Gasket
6. Thrust washer
7. Snap ring
8. Input shaft
9. Thrust washer
10. Hub
11. Disc kit
12. Snap ring
13. Spring
14. Ring
15. Piston ring (rubber)
16. Piston and reed
17. Rubber ring
18. Front clutch cylinder
19. Front servo
20. Servo strut
21. Contact pin
22. Brake band
23. Thrust washer
24. Thrust washer
25. Snap ring
26. Spring seal
27. Spring
28. Snap ring
29. Disc kit
30. Piston ring
31. Piston
32. Front drum
33. Oil ring
34. Rubber ring
35. Needle bearing
36. Key
37. Reverse sun gear
38. Needle thrust plate
39. Oil rings
40. Forward sun gear
41. Oil ring
42. Centre bearing
43. Servo strut
44. Brake band
45. Needle thrust bearing
46. Thrust plate
47. Snap ring
48. Free wheel
49. Brace
50. Planetary gear
51. Thrust plate
52. Gear
53. Snap ring
54. Driven shaft
55. Washer
56. Oil ring
57. Seal ring
58. Gearbox housing
59. Rear servo
60. Stop shaft
61. Nipple
62. Key
63. Pump plate
64. Oil pump, rear
65. Ball
66. Centrifugal governor
67. Snap ring
68. Valve housing
69. Spring
70. Retainer
71. Speedometer gear
72. Flange

Illustration 4-D. Automatic transmission BW 35

10333P