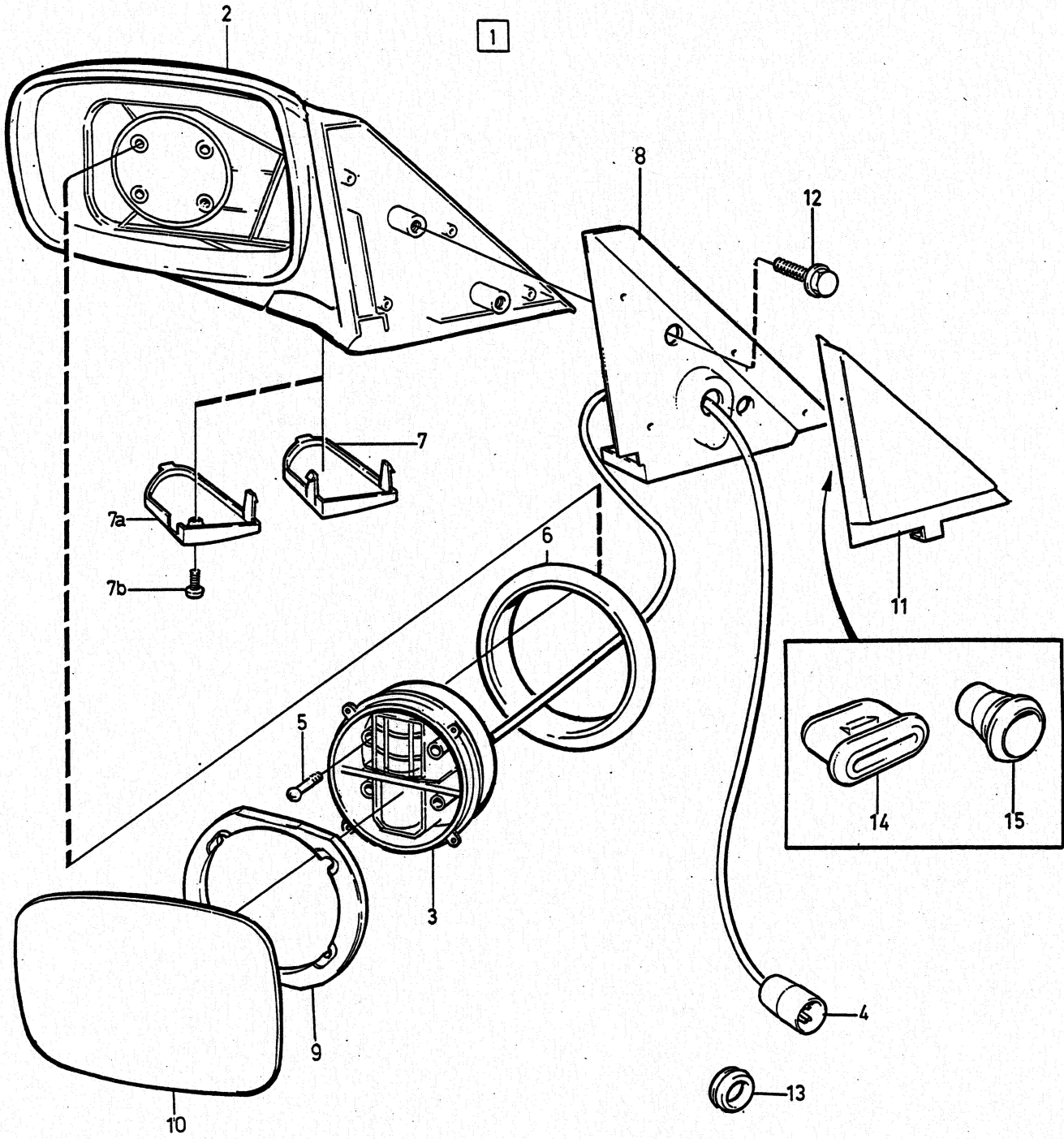


1



**VOLVO**  
Genuine Parts  
PV 840 63379

A	L.H.D					DOOR MIRRORS ELECTRICALLY OPERATED	UTVÄNDIG BACKSPEGEL, ELDRIVEN	Group Grupp <b>84</b>			
	B	C	D	E	Page Sida <b>875</b>						
B	R.H.D					1)					
C											
D											
E											
Fig	Part No. Artikel nr	Quantity / Antal					P S	Description	Benämning	Notes Anmärkning	S R
		A	B	C	D	E					
1	1372428-1	1	-	-	-	-	Rear view mirror, l.h. flat glass	Backspegel, v plant glas .....	-1991	2	
	1372427-3	1	-	-	-	-	Rear view mirror, r.h. flat glass	Backspegel, h plant glas .....	-1991	2	
	1372430-7	1	-	-	-	-	Rear view mirror, l.h. wide angle	Backspegel, v vidvinkel .....	-1991	2	
	1372429-9	1	-	-	-	-	Rear view mirror, r.h. convex glass	Backspegel, h konvext glas .....	2) -1991	2	
	1372431-5	-	1	-	-	-	Rear view mirror, l.h. convex glass	Backspegel, v konvext glas .....	2) -1991	2	
	1372433-1	-	1	-	-	-	Rear view mirror, r.h. wide angle	Backspegel, h vidvinkel .....	-1991	2	
	1372420-8	-	1	-	-	-	Rear view mirror, l.h. flat glass	Backspegel, v plant glas .....	-1991	2	
	1372432-3	-	1	-	-	-	Rear view mirror, r.h. flat glass	Backspegel, h plant glas .....	-1991	2	
	1372490-1	-	1	-	-	-	Rear view mirror, l.h. ....	Backspegel, v .....	(J) -1991	2	
	1372491-9	-	1	-	-	-	Rear view mirror, r.h. ....	Backspegel, h .....	(J) -1991	2	
	3540192-6	1	-	-	-	-	Rear view mirror, l.h. flat glass	Backspegel, v plant glas .....	1992-	2	
	3540191-8	1	-	-	-	-	Rear view mirror, r.h. convex glass	Backspegel, h konvext glas .....	1992-	2	
	3540194-2	1	-	-	-	-	Rear view mirror, l.h. wide angle	Backspegel, v vidvinkel .....	1992-	2	
	3540193-4	1	-	-	-	-	Rear view mirror, r.h. convex glass	Backspegel, h konvext glas .....	2) 1992-	2	
	3540195-9	-	1	-	-	-	Rear view mirror, l.h. convex glass	Backspegel, v konvext glas .....	2) 1992-	2	
3540196-7	-	1	-	-	-	Rear view mirror, r.h. wide angle	Backspegel, h vidvinkel .....	1992-	2		
3540197-5	-	1	-	-	-	Rear view mirror, r.h. flat glass	Backspegel, h plant glas .....	1992-	2		
3540198-3	-	1	-	-	-	Rear view mirror, l.h. ....	Backspegel, v .....	(J) 1992-	2		
3540206-4	-	1	-	-	-	Rear view mirror, r.h. ....	Backspegel, h .....	(J) 1992-	2		
2		1	1	-	-	NS • Mirror casing .....	• Spegelkåpa .....				
3	1372203-8	1	1	-	-	• Drive unit, l.h. ....	• Drivenhet, v .....	-1991	3		
	1312916-8	1	1	-	-	• Drive unit .....	• Drivenhet .....	-1991	3		
	3540751-9	1	1	-	-	• Drive unit .....	• Drivenhet .....	1992-	3		
4	945828-2	1	1	-	-	•• Pin housing .....	•• Stiftisolator .....		3		
	949863-5	4	4	-	-	• Screw .....	• Skruv .....	-1991	2		
5	956053-3	1	1	-	-	• Screw .....	• Skruv .....	1992-	2		
	1321694-0	1	1	-	-	• Rubber bellows .....	• Gummibälg .....		3		
7	1312533-1	1	-	-	-	• Cap, l.h. ....	• Lock, v .....	ALTER 1	3		
	1312535-6	1	-	-	-	• Cap, r.h. ....	• Lock, h .....	ALTER 1	3		
	1312536-4	-	1	-	-	• Cap, l.h. ....	• Lock, v .....	ALTER 1	3		
	1312534-9	-	1	-	-	• Cap, r.h. ....	• Lock, h .....	ALTER 1	3		
7a	9142057-0	1	-	-	-	• Cap, l.h. ....	• Lock, v .....	ALTER 2	3		
	9142059-6	1	-	-	-	• Cap, r.h. ....	• Lock, h .....	ALTER 2	3		
	9142060-4	-	1	-	-	• Cap, l.h. ....	• Lock, v .....	ALTER 2	3		
	9142058-8	-	1	-	-	• Cap, r.h. ....	• Lock, h .....	ALTER 2	3		
7b	9432518-0	2	2	-	-	• Screw .....	• Skruv .....	ALTER 2	3		
8	1312537-2	1	1	-	-	• Seal, l.h. ....	• Tätning, v .....		3		
	1312538-0	1	1	-	-	• Seal, r.h. ....	• Tätning, h .....		3		
9	1321061-2	1	1	-	-	• Clamping ring .....	• Klämring .....		3		
10	3518947-1	1	-	-	-	• Mirror glass, l.h. wide angle	• Spegelglas, v vidvinkel .....	-1991	2		
	3518942-2	1	-	-	-	• Mirror glass, r.h. convex glass	• Spegelglas, h konvext glas ...	-1991	2		
	3518948-9	-	1	-	-	• Mirror glass, r.h. wide angle	• Spegelglas, h vidvinkel .....	-1991	2		
	3518941-4	-	1	-	-	• Mirror glass, l.h. convex glass	• Spegelglas, v konvext glas ...	-1991	2		
	3518946-3	-	1	-	-	• Mirror glass, r.h. flat glass ...	• Spegelglas, h plant glas .....	-1991	2		
	3518945-5	-	1	-	-	• Mirror glass, l.h. flat glass ...	• Spegelglas, v plant glas .....	-1991	2		
	3518944-8	-	1	-	-	• Mirror glass, r.h. ....	• Spegelglas, h .....	(J) -1991	2		
	3518949-7	-	1	-	-	• Mirror glass, l.h. ....	• Spegelglas, v .....	(J) -1991	2		
	3538982-4	1	-	-	-	• Mirror glass, l.h. flat glass ...	• Spegelglas, v plant glas .....	1992-	3		
	3538983-2	-	1	-	-	• Mirror glass, r.h. flat glass ...	• Spegelglas, h plant glas .....	1992-	2		
3538984-0	1	-	-	-	• Glass, r.h. convex glass .....	• Glas, h konvext glas .....	1992-	3			

1) 240 4DRS CH 378165-. 240 5DRS CH 840617-.

2) For vehicles for wide angled mirrors on drivers side. / För vagnar med vidvinkelbackspegel på förarsidan.

A	L.H.D						DOOR MIRRORS ELECTRICALLY OPERATED		UTVÄNDIG BACKSPEGEL, ELDRIVEN		Group
											Grupp
B	R.H.D										84
C											Page
D											Sida
E											877
Fig	Part No. Artikel nr	Quantity / Antal					P S	Description	Benämning	Notes Anmärkning	S F
		A	B	C	D	E					
	3538976-6	-	1	-	-	-	• Mirror glass, l.h. convex glass	• Spegelglas, v konvext glas ....	2) 1992	3	
	3538977-4	1	-	-	-	-	• Mirror glass, r.h. convex glass	• Spegelglas, h konvext glas ...	1992-	3	
	3538980-8	1	-	-	-	-	• Mirror glass, l.h. wide angle	• Spegelglas, v vidvinkel .....	1992-	3	
	3538981-6	-	1	-	-	-	• Mirror glass, r.h. wide angle	• Spegelglas, h vidvinkel .....	1992-	3	
	3540813-7	-	1	-	-	-	• Mirror glass, l.h. ....	• Spegelglas, v .....	(J) 1992-	2	
	3538979-0	-	1	-	-	-	• Mirror glass, r.h. ....	• Spegelglas, h .....	(J) 1992-	2	
11	1312797-2	1	1	-	-	-	Panel, l.h. ....	Panel, v .....		3	
	1312798-0	1	1	-	-	-	Panel, r.h. ....	Panel, h .....		3	
12	968009-1	4	4	-	-	-	Screw .....	Skruv .....	-1991	2	
	972411-3	4	4	-	-	-	Screw .....	Skruv .....	1992-	2	
13	941269-3	2	2	-	-	-	Protecting plug .....	Skyddsplugg .....		2	
14	1312801-2	2	2	-	-	-	Sealing plug .....	Tätningsslugg .....		3	
15	1312811-1	2	2	-	-	-	Sealing plug .....	Tätningsslugg .....		3	

1) 240 4DRS CH 378165-. 240 5DRS CH 840617-.

2) For vehicles for wide angled mirrors on drivers side. / För vagnar med vidvinkelbackspegel på förarsidan.