

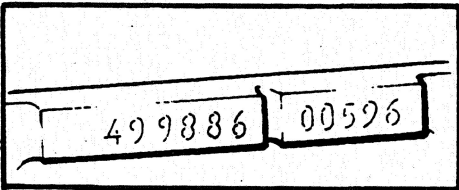
Group

01

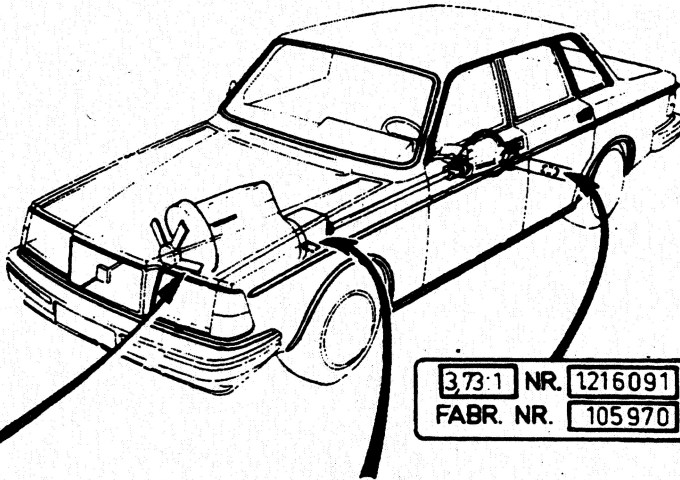
Page

18

FOREWORD (GB)



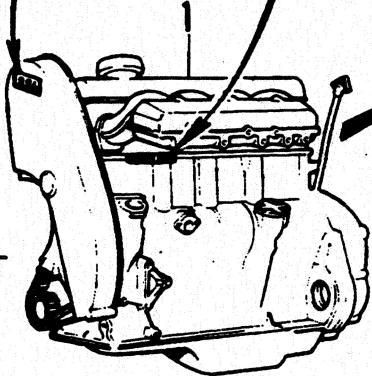
886



3.73:1 NR. 1216091
FABR. NR. 105970

5

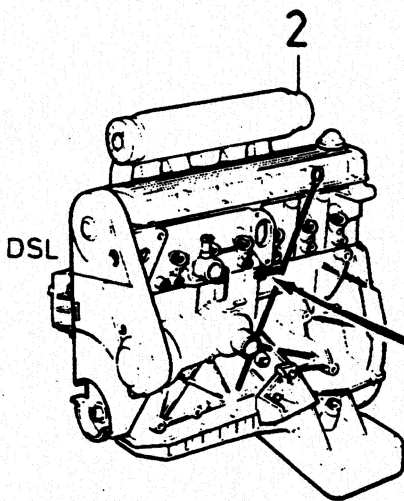
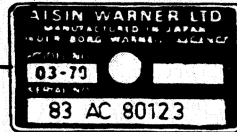
4 CYL



3

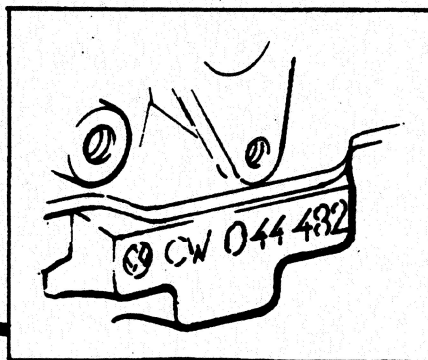
M 46 NR. 1216097
FABR. NR. 28439

4



2

DSL



VOLVO
Genuine Parts
PV 011 54950

FOREWORD (GB)

Plates on engine, gearbox, rear axle**Engine****Type designation, part number, serial number**

Position:

.1) 4CYL, stamped on left-hand side of cylinderblock. Decal on timing gear casing.

.2) DSL, stamped on cylinderblock, under the vacuum pump

Rear axle**Ratio, part number, serial number**

Position:

.5) On halfshaft tube

Gearbox**Type designation, part number, serial number**

Position:

.3) Manual gearbox: On bottom of gearbox

.4) Automatic gearbox: On left-hand side of gearbox