

**VOLVO**  
**260**  
SERIES







Volvo's exclusive 260 series are built for the truly discerning motorist. Not only do they offer a powerful 2.7 litre engine but they have a combination of exterior elegance, top class interior fittings and an unrivalled specification. All these help to make the 260 series cars the 'top' of the Volvo range.

The 260 series is not designed for the average motorist. Rather it is designed for the individualist. Someone who seeks all the traditional Volvo virtues of quality, reliability and that 'something extra' which makes his car distinctive.




This is the Volvo 260 driving seat. It was designed by orthopaedic specialists to offer you the ultimate in comfort. You can select the best possible driving position for yourself as the seat can be adjusted in virtually every direction. It is fitted with a wide handle below the front edge for rapid adjustment fore and aft. The backrest can be adjusted to the widest possible choice of settings. You can even adjust the height of your driving seat.

There is an adjustable lumbar support. This gives you excellent support just where you need it. It can be easily adjusted even when driving.

Another Volvo feature is the built-in electrical seat heating which automatically starts up when the temperature is below  $14^{\circ}\text{C}$ . Heating continues until the comfort temperature of  $26^{\circ}\text{C}$  is reached. All these features make the Volvo driving seat unique but then this is what you expect from the Volvo 260 series.

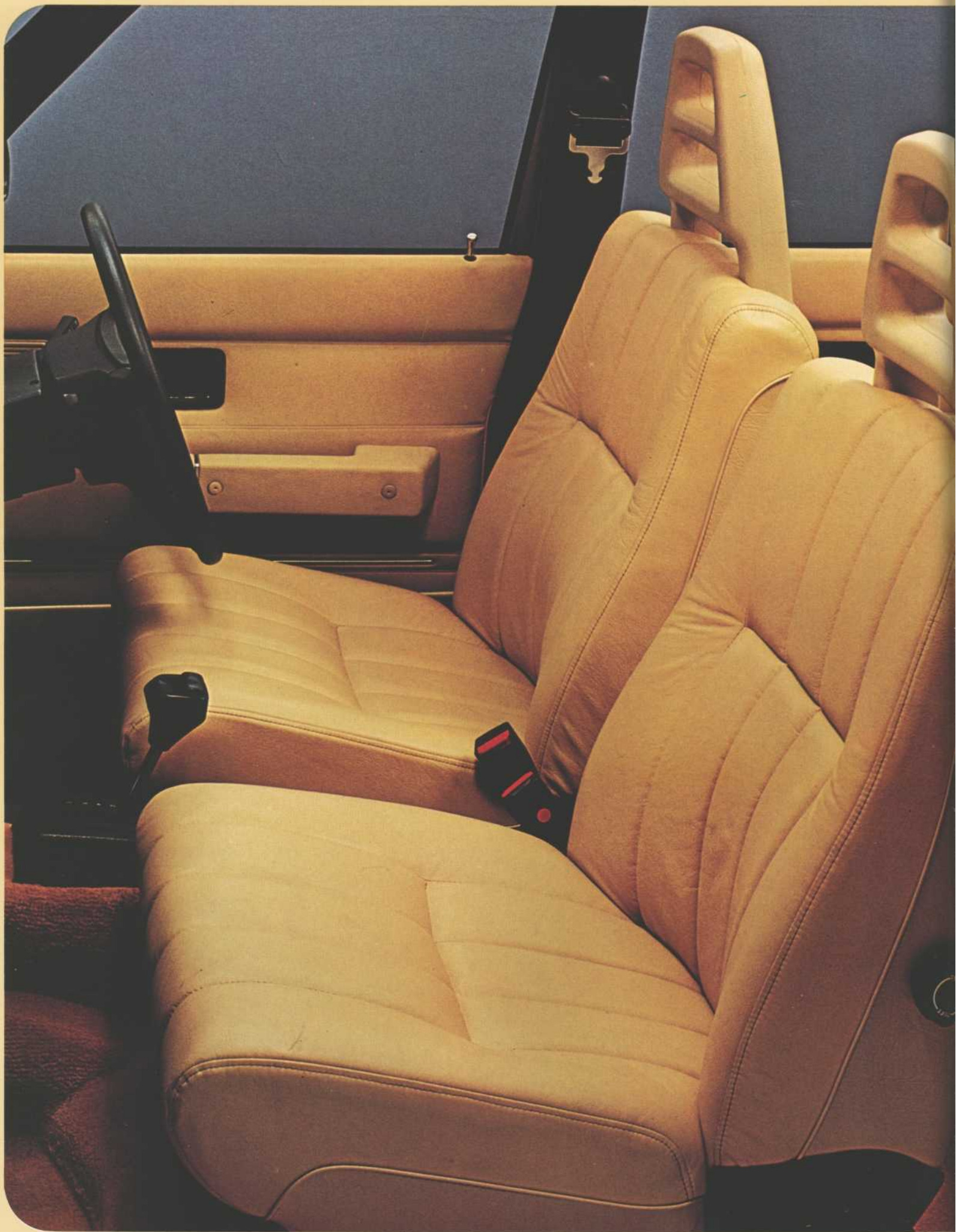


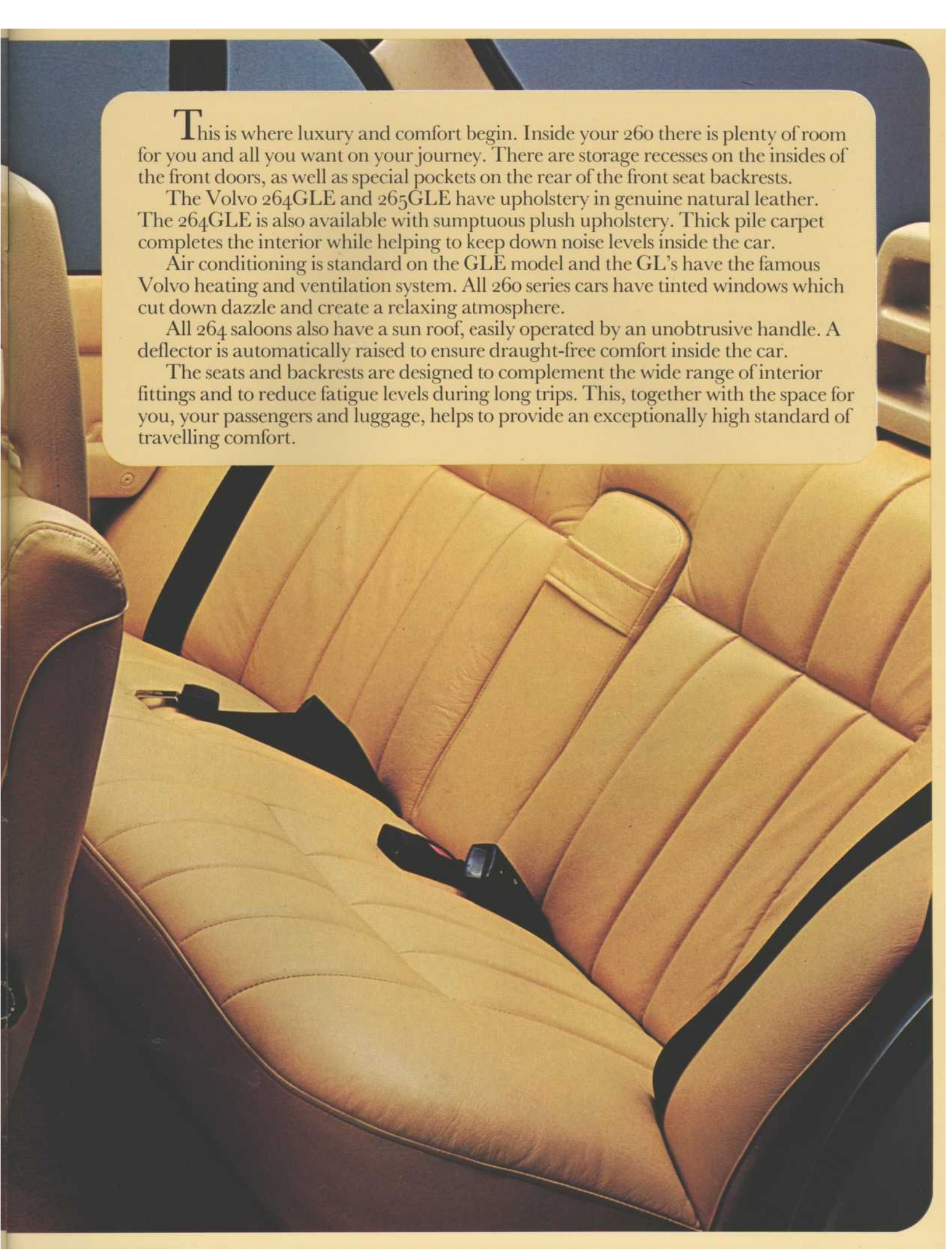


**D**riving the powerful smooth 2.7 litre fuel injected Volvo is a unique experience. You sit in supreme comfort. All controls are at your finger tips. Driving is made easier with power assisted steering, Volvo's flexible suspension and the power assisted disc brakes.

All the 'Volvo virtues' are engineered into these cars. With the 264GLE and 265GLE however there is an extensive range of equipment which is almost unrivalled by any other motor cars. Air conditioning is standard. Also electrically operated exterior door mirrors, electric windows, front and rear, tinted glass, electrically heated driving seat, sun roof (264GLE only), leather upholstery, (plush is also available on the 264GLE), metallic paint, inertia reel seat belts front and rear, automatic transmission, halogen head lamps, headlamp wiper/washers. All these features help to make the 264GLE and 265GLE a car for the individualist – the top of the famous Volvo range of cars.







This is where luxury and comfort begin. Inside your 260 there is plenty of room for you and all you want on your journey. There are storage recesses on the insides of the front doors, as well as special pockets on the rear of the front seat backrests.

The Volvo 264GLE and 265GLE have upholstery in genuine natural leather. The 264GLE is also available with sumptuous plush upholstery. Thick pile carpet completes the interior while helping to keep down noise levels inside the car.

Air conditioning is standard on the GLE model and the GL's have the famous Volvo heating and ventilation system. All 260 series cars have tinted windows which cut down dazzle and create a relaxing atmosphere.

All 264 saloons also have a sun roof, easily operated by an unobtrusive handle. A deflector is automatically raised to ensure draught-free comfort inside the car.

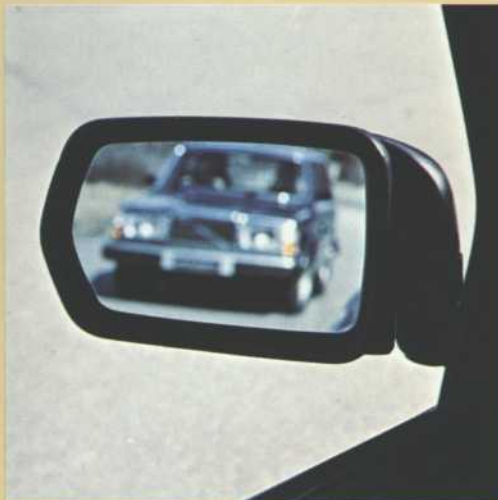
The seats and backrests are designed to complement the wide range of interior fittings and to reduce fatigue levels during long trips. This, together with the space for you, your passengers and luggage, helps to provide an exceptionally high standard of travelling comfort.



Volvo is world famous for its quality. This in-built quality means lower running costs and higher trade-in value. But its real value is to people who place time at a premium because it means less time off the road. All six cylinder Volvo's have power steering as well as a really comprehensive specification. This is because they are designed with you in mind – those special people who drive a lot of miles every year and want to enjoy their driving.



GLE models have electrically operated windows in both front and rear doors. The rear windows can be locked from the driving seat. All windows have tinted glass.



The anti-dazzle door mirrors on GLE cars are electrically operated. They are adjusted from the driving seat.



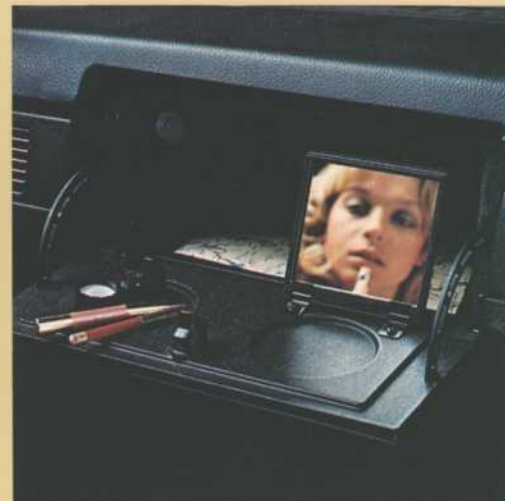
The windscreen wipe/wash stalk has a special position for intermittent windscreen wiper operation during drizzle.



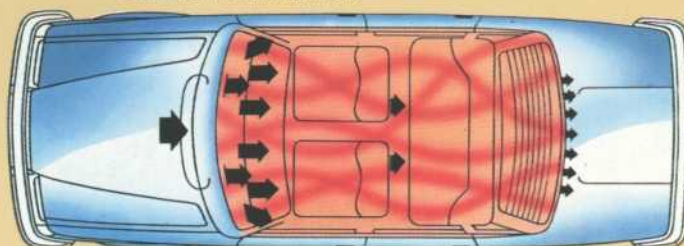
The large rectangular halogen headlights have separate reflectors for full and dipped beams to ensure the best visibility at all times. Washers and wipers keep the headlight glass clean from dirt.



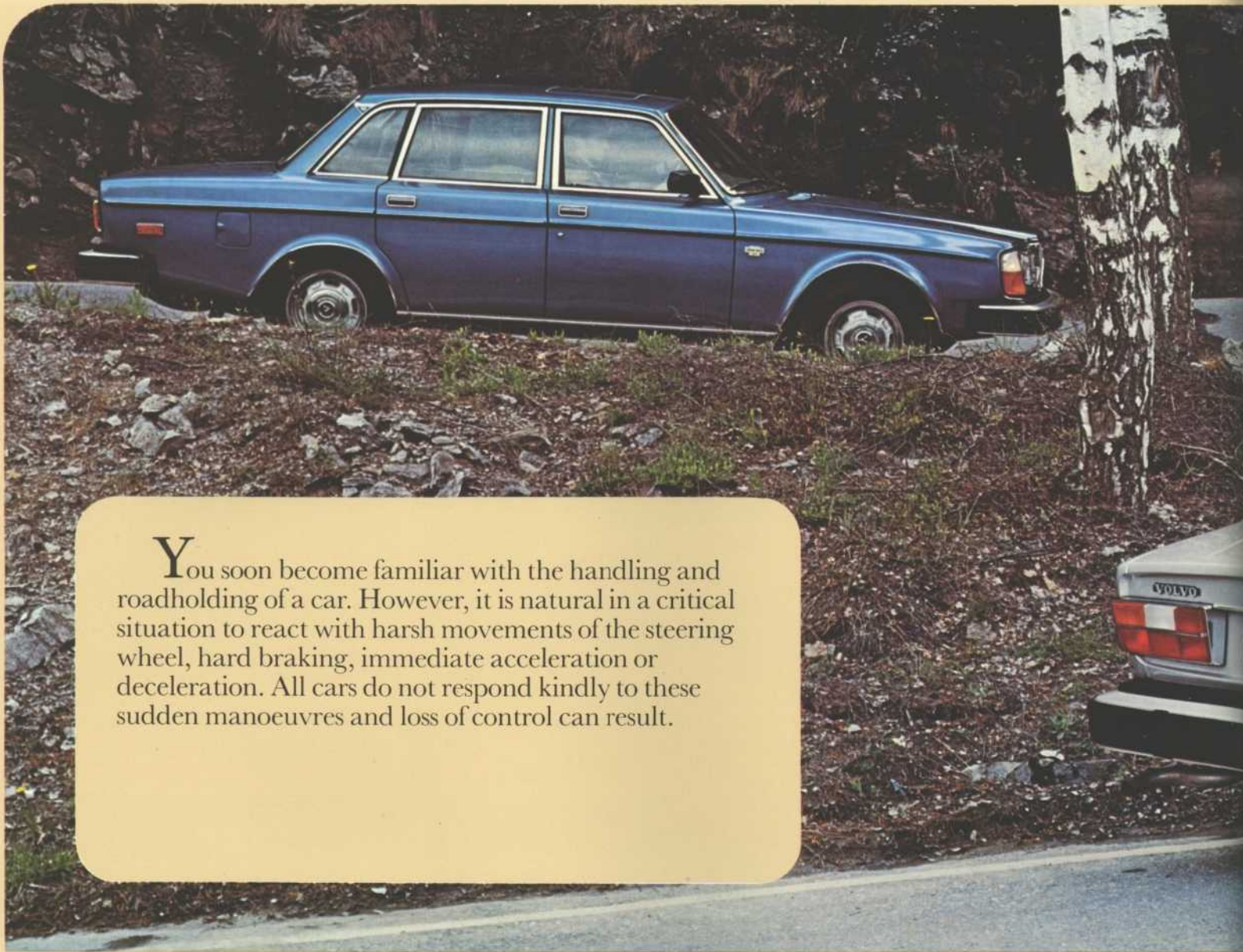
The rear window is electrically heated for rapid defrosting. The 264GLE also has a two part blind to protect rear seat passengers from intensive sunshine without obstructing the view of the driver.



The spacious, lockable glovebox has automatic lighting. A folding make-up mirror is provided.



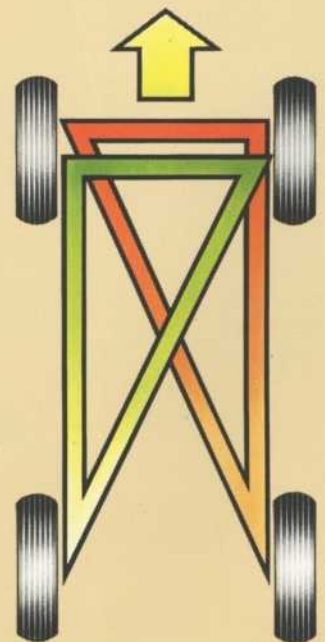
The super-efficient heater system in the GL Models provides warm or cool air from 12 feed points. The system is thermostatically controlled, featuring a three-speed fan. Air conditioning is standard on all GLE models.



**Y**ou soon become familiar with the handling and roadholding of a car. However, it is natural in a critical situation to react with harsh movements of the steering wheel, hard braking, immediate acceleration or deceleration. All cars do not respond kindly to these sudden manoeuvres and loss of control can result.

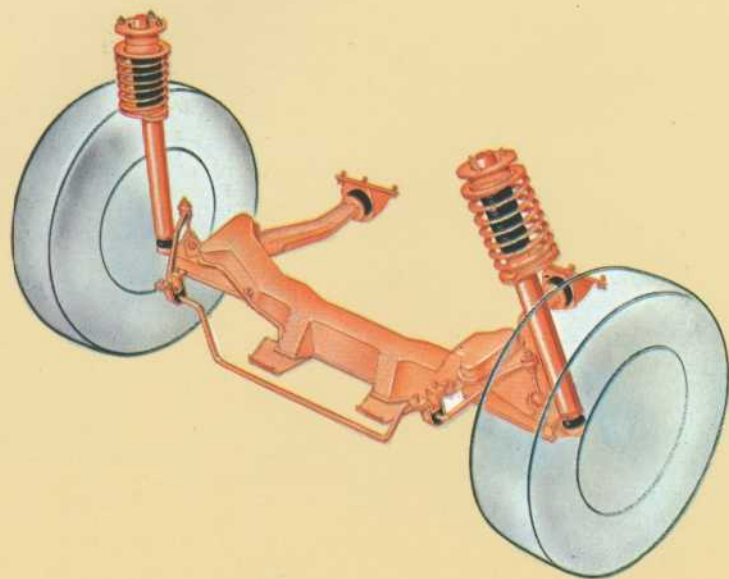
Volvo cars are built to behave the way you would expect them to even in the case of sudden change of direction or heavy braking. This is because of the excellent balance between the high precision steering and rugged suspension together with stable roadholding aided by the long wheelbase and wide track.

The triangle-split dual circuit braking system means that both front wheels and one rear wheel can be braked even if one circuit should fail. Volvo feature a stepped bore master cylinder to ensure pedal pressure need not be increased to any great extent in the event of failure. Also, as much as 80% of braking effect can still be maintained. Power assisted disc brakes are fitted all round, and ventilated discs are used at the front. A special relief valve prevents the rear wheels from locking up before the front wheels in the event of emergency braking.



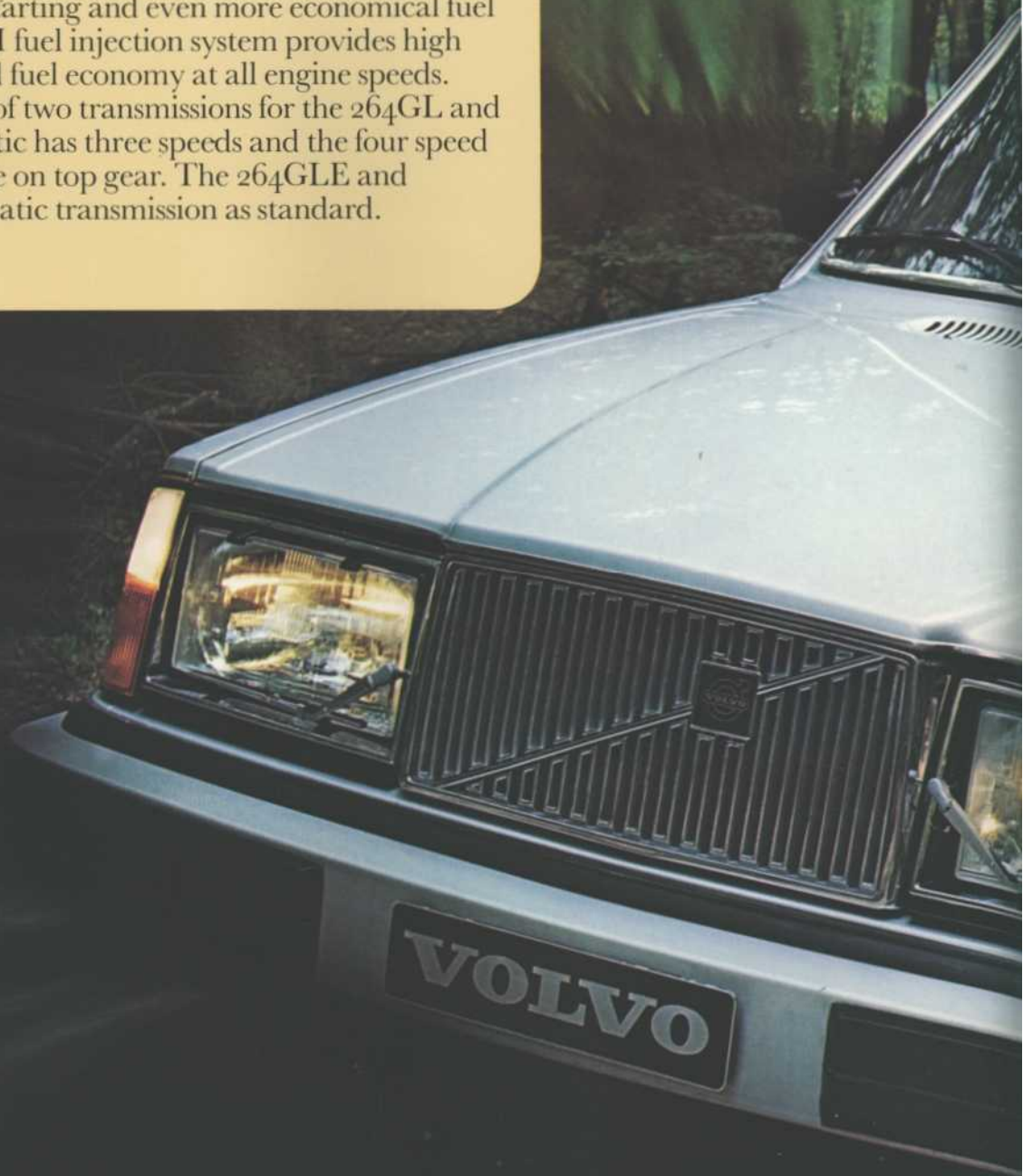


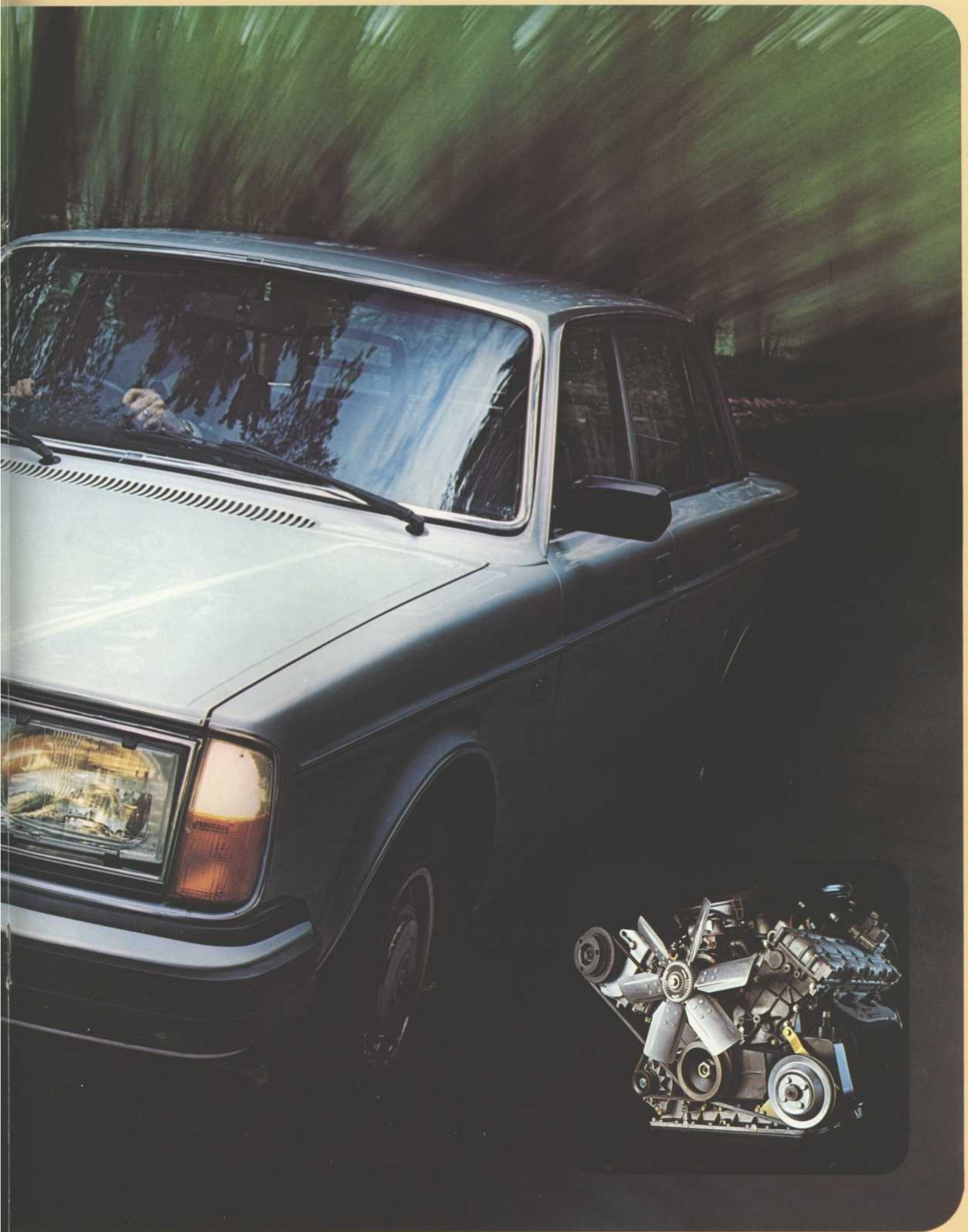
The Volvo 264 and 265 are a pleasure to drive. Their luxurious fittings, coupled with the precise Swedish engineering helps to guarantee this. For example, both models have power steering and spring strut front suspension as well as an anti-roll bar. The rear axle is of the live type, with coil spring/damper units. Together with the wide steel belted radial ply tyres the suspension provides exceptionally good roadholding and extremely comfortable travel.



**T**he powerful 2.7 litre fuel injected V-6 engine is so quiet that you have to look at the tachometer to believe that it is running. When you accelerate, it responds instantly. The engine block and cylinder head are made of light alloy. This contributes to the excellent weight distribution of the car. A transistorised ignition system without contact points is used, providing excellent starting and even more economical fuel consumption. The CI fuel injection system provides high output and improved fuel economy at all engine speeds.

There is a choice of two transmissions for the 264GL and 265GL. The automatic has three speeds and the four speed manual has overdrive on top gear. The 264GLE and 265GLE have automatic transmission as standard.

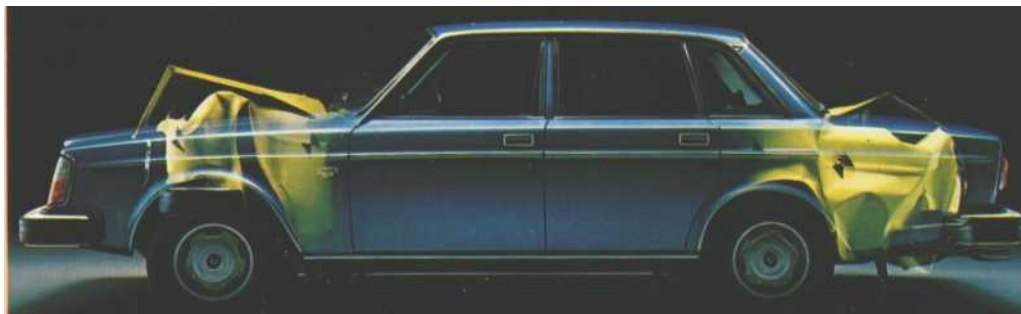


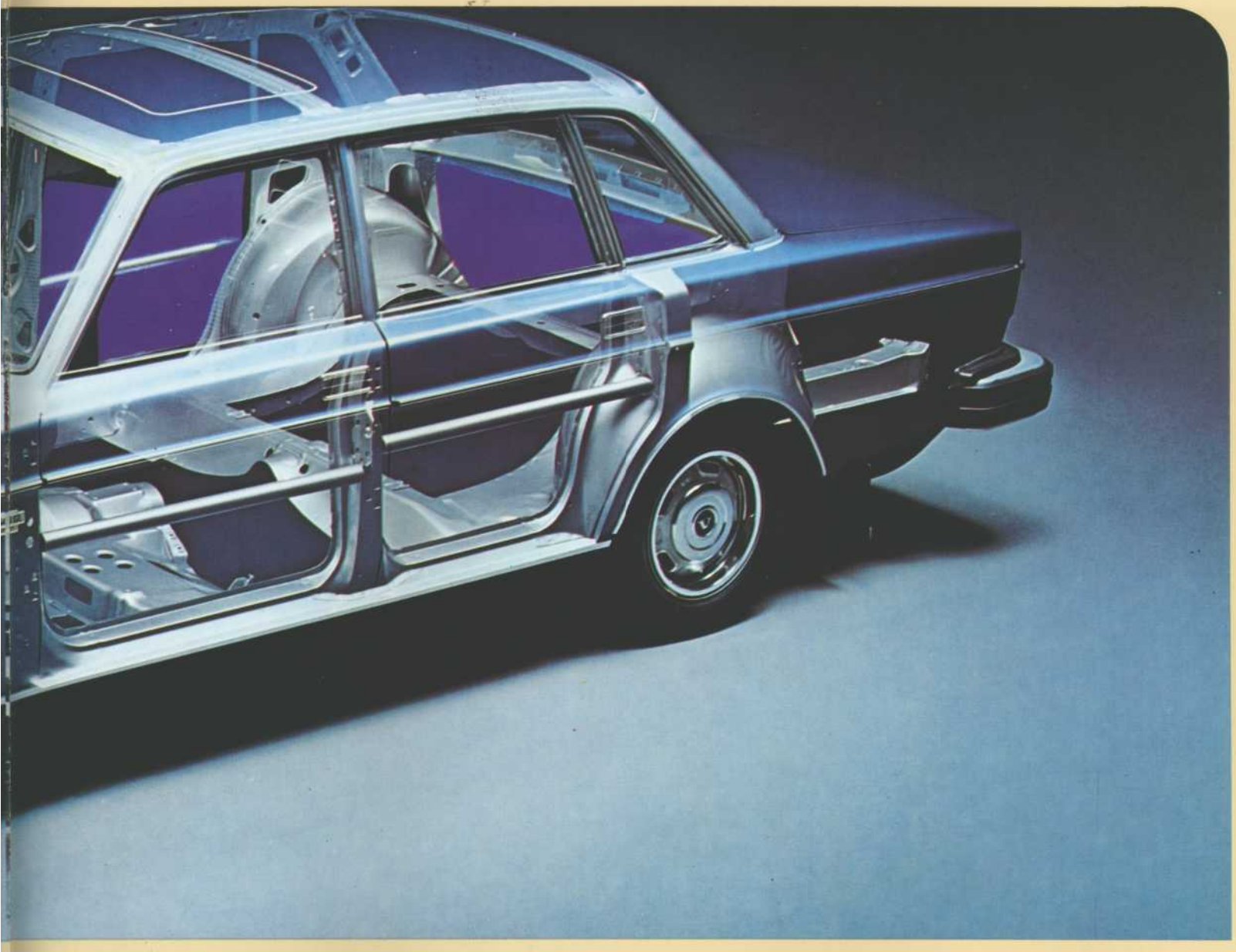




The 260 Volvos reflect the well proven safety record established over the years. Accurate power steering, a

dependable braking system, precise handling, day running lights and side location lights all play their part in the





Volvo safety package. If an accident should occur however, the design of these cars is such that you are afforded a very high level of injury protection.

The body is designed to absorb the impact of collision. There are crumple zones at the front and rear. Acting as energy absorbing areas these crumple zones absorb some of the force before it can reach the passenger compartment. The driver and passengers are protected by the world famous Volvo safety cage. The doors also include built-in side impact protection, as well as childproof locks.

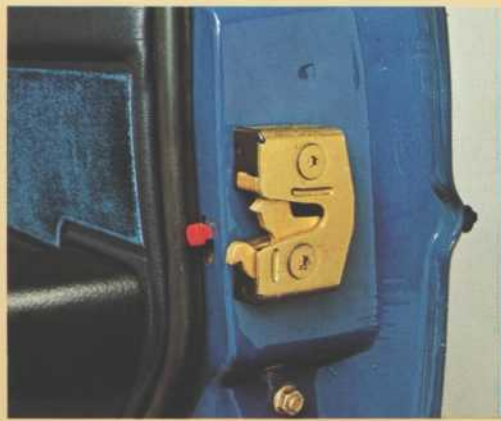
Continuous safety research is carried out at Volvo. This includes collision testing from the front, rear and side.

Deformation and stresses are measured on test dummies. Volvo's concern is for your safety and that of your passengers.





*The windscreen is of high-impact laminated glass. The glass remains completely transparent even if it is struck hard by flying stones.*



*Volvo door latches are designed to remain closed. The rear doors have child-proof locks with an override so that they cannot be opened from inside the car.*



*The centre of the steering wheel consists of a large pad which can absorb and spread the pressure exerted by a body if thrown forward.*

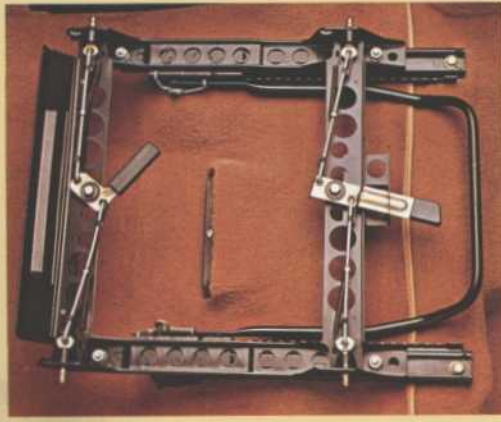


*The fuel tank is placed close to the rear axle. It is completely separate from the passenger and luggage compartments.*





*Volvo 264 and 265 cars have integral head restraints. The 264GLE also has head restraints on the rear seats.*



*The front seat attachment is designed to withstand extremely high stress, such as the kind that occurs in accidents, without the seat loosening.*



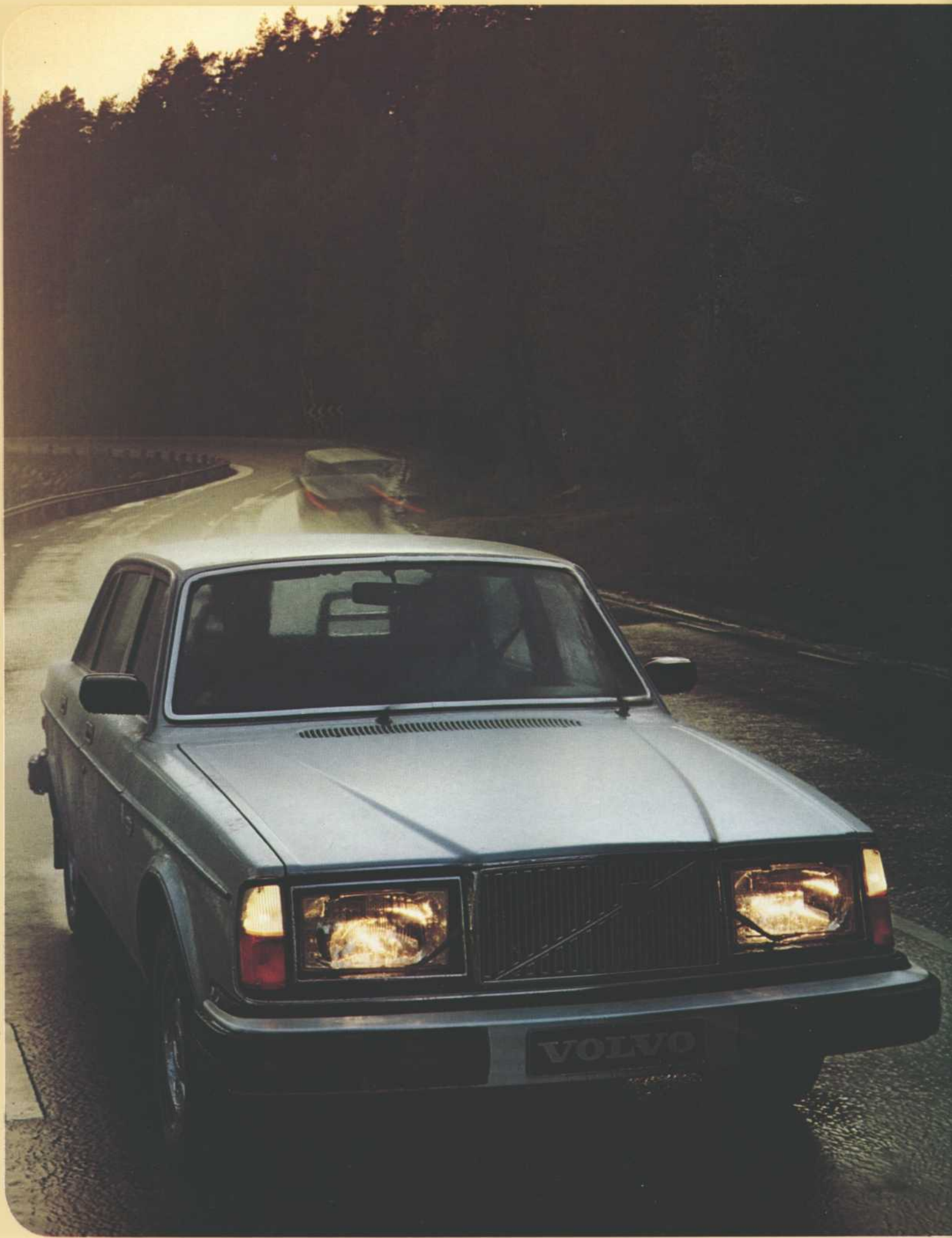
*The upholstery and other interior fittings materials are flame resistant.*



*The steering wheel and steering shaft are designed to provide maximum safety in the event of a collision: The lower steering shaft section 'gives' way, the steering shaft 'telescopes', the steering*

*column slides forwards and downwards, the steering wheel attachment 'gives' so that the padded surface in the centre of the steering wheel has as large a contact area as possible.*







**F**or many years the Swedish Motor Vehicle Testing Authority has monitored the life expectancy of all cars on the Swedish roads. The latest figures indicate a life expectancy of 16.5 years for a Volvo. This outstanding result is almost two years greater than any other car and is clear evidence of the traditional quality construction of Volvo cars.

One of the reasons why a Volvo lasts is the rust-proofing provided in the factory. The electro-chemical rust protection given to the entire body in different stages is supplemented with underbody treatment.

Door sills and doors are well ventilated to avoid moisture collecting and rusting occurring.

This thorough rust-proofing means purely and simply fewer problems and a higher trade-in value for your car.

*Galvanized material is used to a great extent in particularly exposed places. Each Volvo body includes about 37.5 sq ft of double sided galvanized sheet steel for increased protection against corrosion.*



*The exceptionally thorough and extensive painting process contributes to giving your Volvo 260 its enviable reputation for durability.*

Volvo cars have been praised by motoring magazines, motoring organisations and consumer associations throughout the world. In many countries, safety features pioneered by Volvo have in due course become obligatory regulations. For example, seat belts (standard on Volvo since 1959) which must be fitted by law in the United Kingdom. Laminated windscreens, head restraints and day running lights can be expected to become mandatory requirements in the future in some countries. The Volvo zoo series has been awarded:



1976, The Don Safety Trophy, England.



1975, Velocidad Magazine for Safety, Spain.



1975, The Best Safety Design, Thailand.




1975, Car and Driver Magazine - Best Family car, USA.



1974, The Gold Medal for Safety awarded by M (The Swedish Automobile Association).

The Volvo 265 estate car has all the comforts of the 264 saloon. But it has been built to offer you the maximum facilities for both pleasure and business motoring



The image shows the interior of a Volvo 265 estate car. The rear seat is folded down, revealing a large cargo area. The seats are upholstered in a light-colored material, possibly leather or a high-quality fabric. The cargo area is covered with a textured, brownish-orange carpet. The overall design is functional and spacious.

The Volvo 265 estate car is unique in its class. As well as the exceptionally high standard of design and comfort it has enormous areas of space. Behind the rear seat there is huge 42 cu ft area for luggage accommodation. For extra large loads, though, the rear seat can be folded down rapidly and you then have a cargo area over 6 ft long with a volume of 70 cu ft. Under the floor there is also a concealed recess for smaller items.

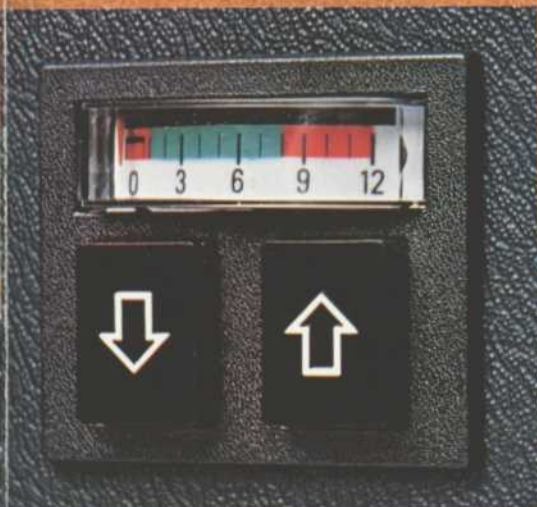
The rear loadspace has a fitted textile carpet to protect the luggage, giving a smart appearance and maintaining the low noise level.

The rear door has an electrically heated window and a wash/wipe mechanism. This door opens right up to roof level and to a high angle to aid access. The loading level is only 23 inches above the ground and there is no step in the way.

The GLE version of the 265 has its upholstery made of genuine leather.

*An illustration of how large the cargo area is can be seen below.*

*Accessories include a level control system which maintains the car absolutely horizontal even when it is heavily laden at the rear. A specially designed extra rear seat can be folded away when not needed.*





# Technical Information

|                                 |                                 |
|---------------------------------|---------------------------------|
| Engine                          | 264 GL 265 GL 264 GLE 265 GLE   |
| Designation                     | B27E                            |
| Number of cylinders             | 6                               |
| Displacement, cm <sup>3</sup>   | 2664                            |
| Bore x stroke, mm               | 88.0 x 73.0                     |
| Max output, hp at rpm DIN       | 140/6000                        |
| Max output, kW at r/s DIN       | 103/100                         |
| Max torque, kpm at rpm DIN      | 20.8/3000                       |
| Max torque Nm at r/s            | 204/50                          |
| Compression ratio               | 8.7:1                           |
| Carburation                     | CI fuel injection               |
| Octane rating                   | 93                              |
| Engine block and cylinder head  | Light alloy                     |
| Valve system                    | Overhead camshafts, rocker arms |
| Camshaft drive                  | Chain                           |
| <b>Cooling System</b>           |                                 |
| Frost-proofed and sealed system | 2.4 Imp. galls/10.9 litres      |
| <b>Electrical system</b>        |                                 |
| Battery                         | 12V/70Ah                        |
| Alternator                      | 55A                             |
| Ignition system                 | Breakerless, electronic         |

## Transmission

The Volvo 264GL and 265GL are available with a 4-speed manual gearbox and an electrically operated overdrive or automatic transmission. The Volvo 264GLE and 265GLE have automatic transmission as standard.

## Braking System

Power assisted, all disc, ventilated on front, dual circuit, triangle-split system. Each circuit operates simultaneously on both front wheels and one each to the rear wheel. Brake pipe of rust-resistant copper/nickel alloy. A relief valve in each circuit prevents the rear wheels from locking up prematurely during emergency braking. The master cylinder is of the stepped bore type. Hand brake operates on rear wheels through separate drum brakes.

## Steering Gear

Rack and pinion. Split type steering shaft of safety type. Ratio 17.1:1 Power assisted. Number of turns of steering wheel from lock to lock-3.5.

## Suspension

Front: spring strut type. Rear: live rear axle carried in longitudinal rubber-mounted support arms. There are also two torque rods and a track rod. An anti-roll bar fitted to the front. Volvo 264GL and GLE cars are also fitted with an anti-roll bar on the rear suspension.

## Wheels and Tyres

264GL/264GLE - steel braced radial ply tyres. 185HR 14 in 5.5J -14 in rims.  
265GL/265GLE - steel braced radial ply tyres 185SR 14 in 5.5J-14 in rims.

## Fuel Tank

Safety location beside rear axle. Capacity 13.2 Imp galls (60 litres).

## Instrumentation

Housed in padded dashboard. Rheostat-controlled instrument lighting. Six-figure mileometer, trip meter, fuel gauge and coolant temperature gauge. Warning lamps for battery charging, oil pressure, full headlights, turn indicators, hand brake and brake circuit failure. Bulb integrity sensor. Glovebox lighting. Combined steering wheel lock and ignition switch. The centre console includes the controls for the electrically heated rear window, rear fog lights, four way hazard warning light's and also heating and ventilation system. 'Fasten Seat Belts' reminder. Cigar lighter, ashtray. Recess for radio.

## Turning Circle

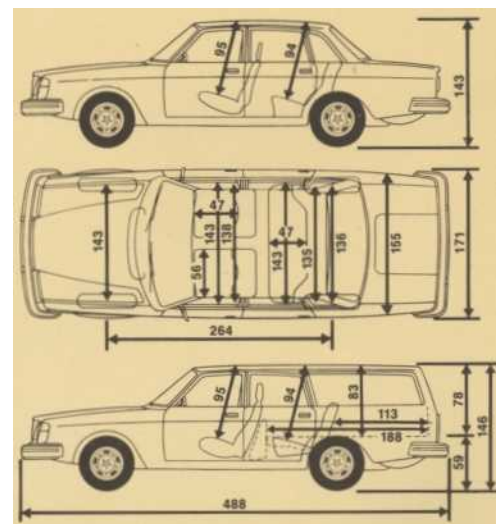
Between kerb 32 ft 2 in.

## Weights

Volvo 264GL and GLE:  
Kerb weight approx 1370-1425 kg  
Gross laden weight 4180 lb (1900 kg)  
Volvo 265GL and GLE:  
Kerb weight approx 1430-1465 kg  
Gross laden weight 4299 lb (1950 kg)  
Permissible trailer weight 1500 kg

## Warranty

Twelve-month warranty irrespective of mileage.



The factory reserves the right to make changes at any time, without notice to prices, colours, materials, equipment, specifications and models and also to discontinue models.

# Standard Equipment

|   | 264 GL | 264 GLE | 265 GL | 265 GLE |
|---|--------|---------|--------|---------|
| Headlight washers and wipers                  |        |         |        |         |
| Quartz clock                                  |        |         |        |         |
| Tachometer                                    |        |         |        |         |
| Electrically operated windows, front and rear |        |         |        |         |
| Tinted glass                                  |        |         |        |         |
| Sun blinds for rear window                    |        |         |        |         |
| Electrically operated door mirrors            |        |         |        |         |
| Make-up mirror                                |        |         |        |         |
| Glovebox lighting                             |        |         |        |         |
| Fitted carpets                                |        |         |        |         |
| Electrically heated driving seat              |        |         |        |         |
| Air conditioning                              |        |         |        |         |
| Stereo loudspeakers/front doors               |        |         |        |         |
| Head restraints/front                         |        |         |        |         |
| Head restraints/rear                          |        |         |        |         |
| Storage recesses                              |        |         |        |         |
| Inertia reel seat belts front and rear        |        |         |        |         |
| Luggage compartment lighting                  |        |         |        |         |
| High impact laminated windscreen              |        |         |        |         |
| Sunroof                                       |        |         |        |         |
| Halogen headlights                            |        |         |        |         |
| Electrically heated rear window               |        |         |        |         |
| Adjustable lumbar supports                    |        |         |        |         |
| Washer and wiper on rear window               |        |         |        |         |
| Seat belt reminders front and rear            |        |         |        |         |
| Intermittent operation windscreen wiper       |        |         |        |         |
| Bulb integrity sensor                         |        |         |        |         |
| Rear fog lights                               |        |         |        |         |
| Engine compartment light                      |        |         |        |         |
| Hazard warning lights                         |        |         |        |         |
| Cigar lighter                                 |        |         |        |         |
| Illuminated rear ashtray                      |        |         |        |         |
| Power steering                                |        |         |        |         |
| Mud flaps                                     |        |         |        |         |
| Day/night rearview mirror                     |        |         |        |         |
| Driving seat height adjustment                |        |         |        |         |
| Metallic paint                                |        |         |        |         |
| Carpeted boot                                 |        |         |        |         |
| Ventilated disc brakes                        |        |         |        |         |
| Rear courtesy light                           |        |         |        |         |
| Slip fan                                      |        |         |        |         |
| Impact absorbing bumpers                      |        |         |        |         |
| Child-proof locks on rear doors               |        |         |        |         |
| Automatic reversing lights                    |        |         |        |         |
| Day running lights                            |        |         |        |         |
| Radial ply tyres                              |        |         |        |         |

# VOLVO

RSP/PV 5306-78. Engelska/England. Printed in Great Britain

