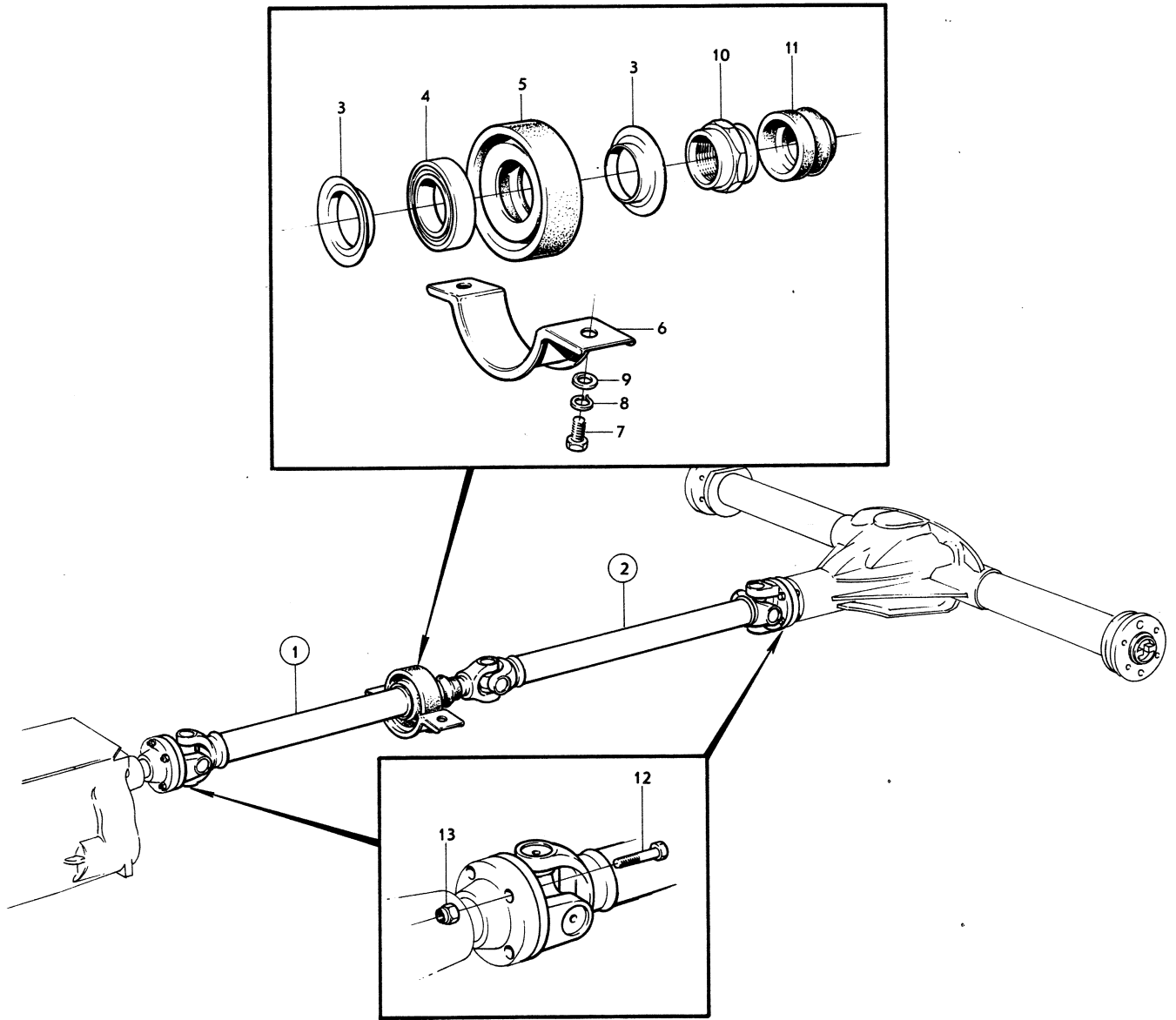
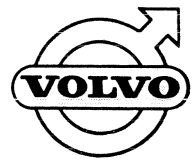


Utgåva Issue	1	KARDANAXEL, STÖDLAGER	PROPELLER SHAFT, CENTRE BEARING	Grupp Group	4	Sida Page	27
-----------------	---	-----------------------	------------------------------------	----------------	---	--------------	----





Sida Page	26	Grupp Group	4	KARDANAXEL, STÖDLAGER	PROPELLER SHAFT, CENTRE BEARING	Utgåva Issue	1
--------------	----	----------------	---	-----------------------	------------------------------------	-----------------	---

Pos. Fig.	Antal Qty				Detalj nr Part No	Benämning	Description	Sats/ Kit	Anmärkning Notes	
1	1	.	.	.	677626-4	KARDANAXEL.	PROPELLER SHAFT	4	M40	010
	1	.	.	.	677627-2	KARDANAXEL.	PROPELLER SHAFT	4	M41	020
2	1	.	.	.	677628-0	KARDANAXEL.	PROPELLER SHAFT	4		030
DET SE SIDA 28COMPONENTS SEE PAGE 28 .			040
3	2	.	.	.	675582-1	STÄNKSKYDD.	BAFFLE.	4		050
4	1	.	.	.	181549-7	KULLAGER.	BALL BEARING.	2		060
5	1	.	.	.	675367-7	LAGERHÅLLARE.	BEARING CAGE.	3		070
6	1	.	.	.	671804-3	ÖVERFALL.	CAP			080
7	2	.	.	.	955523-6	SKRUV	SCREW	0		090
8	2	.	.	.	955921-2	FJÄDERBRICKA.	SPRING WASHER	0		100
9	2	.	.	.	955894-1	BRICKA.	WASHER.	0		110
10	1	.	.	.	675365-1	MUTTER.	NUT	3		120
11	1	.	.	.	675587-0	GUMMITÄTNING.	RUBBER SEAL	2		130
12	8	.	.	.	942267-6	SKRUV	BOLT.	0		140
13	8	.	.	.	950373-1	MUTTER.	NUT	0		150