

Group

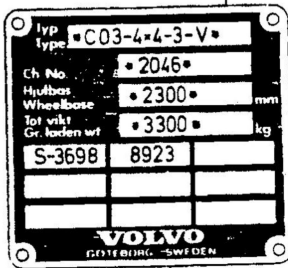
01

Page

12

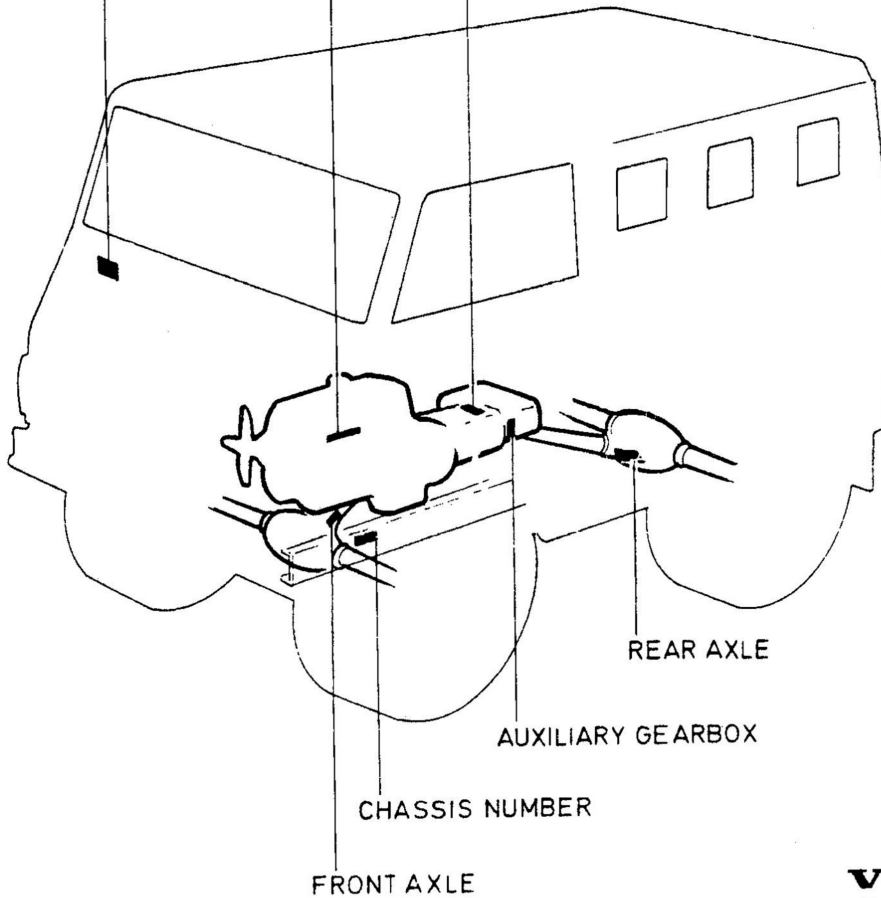
FOREWORD (GB)

MODEL DESIGNATION AND CHASSIS NUMBER



ENGINE DESIGNATION

GEARBOX



FOREWORD (GB)

Group

01

Page

11

This catalogue lists part for the C2 cross country vehicle series.

TYPE DESIGNATION: Type designations of vehicle are as follows:

C202 PU
Wheelbase
2100.

C202 HT
Wheelbase
2100.

C202 CANVAS
Wheelbase
2100.

ENGINE: The vehicles are equipped with engine type B 20 A, see group 20.

GEARBOX: The vehicles are equipped with gearboxes type:
M45 manual 4-speed,

PLATES: The location of the designation plates for type and engine designations, etc. is illustrated on the next page.

ABBREVIATIONS: A clarification of abbreviations used in the catalogue will be found in group 02.

SPECIAL MODELS: The following special models are also listed in the catalogue:

S-3818 Openable windscreen	89014 Rotating lamp, amber
S-3826 PTO for winch	89015 Loading lamp
S-3851 Load-sensitive brake valve	89018 Compressor
S-3868 Peoples Republik of China (PRC)	89023 Rotating lamp, red
S-3869 Peoples Republik of China (PRC)	39024 Rotating lamp, blue
8964 Webasto PU	89025 Rotating lamp, amber
8965 Webasto HT	89026 Rotating lamp, red
8972 Guard net HT	89027 Rotating lamp, blue
8973 Fire Extinguisher	89028 Radio
8983 Reduced compression 85-90 Octane	89064 Loading lamp
8984 Electric engine heater	89065 Tow-ball
	89066 Towing hook (lower)
	89067 Tow-ball
	89076 Outside rear door handle
	89089 Electric engine heater
	89090 Guard net
	89105 Steering column lock

THE PARTS CATALOGUE for the C2 can be ordered from
Volvo Group Support AB
Publications Store
SA A 5510
S-405 08 Göteborg, Sweden
Order nummer:

Language	Paper	Fiche
Swedish/English	212331	212332

VOLVO PARTS CORPORATION
Dept 33620, VAK HA1S
S-405 08 Göteborg, Sweden
Tel: 46 - 31662539