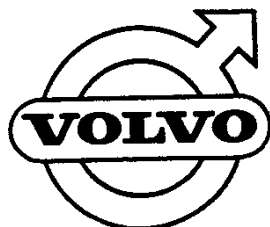
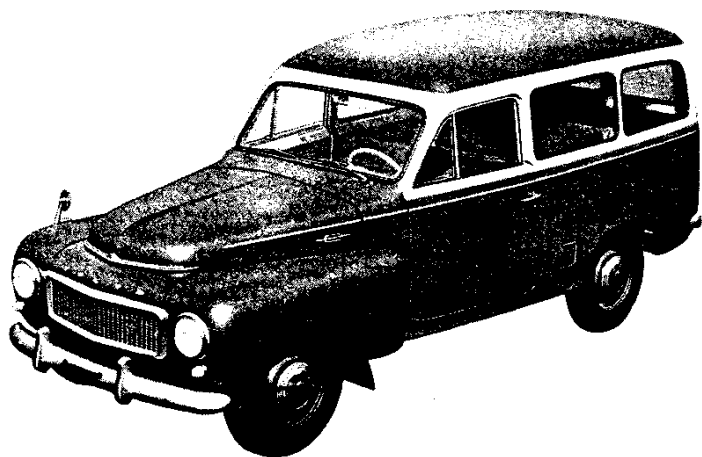


**PV445, P210**  
**RESERVDELSKATALOG**  
**PARTS CATALOGUE**



<b>1</b>	<b>Förord</b> <b>Foreword</b>
<b>2a</b>	<b>Motor</b> <b>Engine</b>
<b>2b</b>	<b>Kylsystem</b> <b>Cooling system</b>
<b>2c</b>	<b>Bränsle- och</b> <b>Avgassystem</b> <b>Fuel and</b> <b>Exhaust systems</b>
<b>2d</b>	<b>Motorreglage</b> <b>Control linkages</b>
<b>3</b>	<b>Elsystem Instrument</b> <b>Electrical equipment</b> <b>Instruments</b>
<b>4</b>	<b>Kraftöverföring</b> <b>Bakaxel</b> <b>Power train</b> <b>Rear axle</b>
<b>5</b>	<b>Bromsar</b> <b>Brakes</b>
<b>6</b>	<b>Framaxel Hjul</b> <b>Styrning</b> <b>Front axle Wheels</b> <b>Steering</b>
<b>7</b>	<b>Ram Fjädring</b> <b>Frame Springs</b>
<b>8</b>	<b>Karosseri</b> <b>Coachwork</b>
<b>9</b>	<b>Övrig utrustning</b> <b>Miscellaneous</b> <b>equipment</b>
	<b>Register</b>